

IN THE DISTRICT COURT OF THE FIFTH JUDICIAL DISTRICT OF THE
STATE OF IDAHO, IN AND FOR THE COUNTY OF TWIN FALLS

In Re CSRBA) PARTIAL DECREE PURSUANT TO I.R.C.P. 54(b)
Case No. 49576) FOR FEDERAL RESERVED
)
) WATER RIGHT NO. 92-11063F

NAME AND ADDRESS: UNITED STATES OF AMERICA ACTING THROUGH
USDA FOREST SERVICE
550 W FORT ST MSC 033
BOISE ID 83724

SOURCE: See Attachment 1, Column A TRIBUTARY: See Attachment 1, Column B

Sources are located on National Forest System Land in the Charlie Creek subwatershed (HUC12 170103040901).

QUANTITY: The amount of water necessary to control and suppress forest fires.

PRIORITY DATE: 01/03/1934

POINT OF DIVERSION: See Attachment 1, Columns C through G

PURPOSE AND PERIOD OF USE:

<u>PURPOSE OF USE</u>	<u>PERIOD OF USE</u>
Administrative-Fire Suppression	01/01 - 12/31

PLACE OF USE: National Forests in Idaho and the Kaniksu, Lolo and Kootenai National Forests in Montana.

See Attachment 2.

OTHER PROVISIONS NECESSARY FOR DEFINITION OR ADMINISTRATION OF THIS WATER RIGHT:

This right is limited to the intermittent diversion and use of water for the purpose of suppressing wildfires. This water right shall not be used as a basis to prevent the future appropriation of water.

This partial decree is subject to such general provisions necessary for the definition of the rights or for the efficient administration of the water rights as may be ultimately determined by the Court at a point in time no later than the entry of a final unified decree. Idaho Code § 42-1412(6).

RULE 54(b) CERTIFICATE

With respect to the issues determined by the above partial judgment it is hereby CERTIFIED, in accordance with Rule 54(b), I.R.C.P., that the court has determined that there is no just reason for delay of the entry of a final judgment and that the court has and does hereby direct that the above partial judgment is a final judgment upon which execution may issue and an appeal may be taken as provided by the Idaho Appellate Rules.

Eric J. Wildman
Presiding Judge of the
Coeur d'Alene-Spokane River Adjudication

Attachment 1

	A	B	C	D	E	F	G
1	SOURCE NAME	TO TRIBUTARY	TOWNSHIP	RANGE	SECTION	QQ	SURVEY CODE AND NUMBER
2	Hume Creek	Charlie Creek	43N	02W	4	NESE	
3	Unnamed Stream	Charlie Creek	43N	02W	4	SESW	
4	Hume Creek	Charlie Creek	43N	02W	4	SESE	
5	Hume Creek	Charlie Creek	43N	02W	4	SWSE	
6	Hume Creek	Charlie Creek	43N	02W	9	NWNE	L 3
7	Hume Creek	Charlie Creek	43N	02W	9	SESW	
8	Hume Creek	Charlie Creek	43N	02W	9	SWNE	
9	Charlie Creek	Santa Creek	43N	02W	10	NESW	
10	East Fork Charlie Creek	Charlie Creek	43N	02W	10	NWSE	
11	Unnamed Stream	Charlie Creek	43N	02W	10	NWSW	
12	Charlie Creek	Santa Creek	43N	02W	10	SESW	
13	Preston Creek	Charlie Creek	43N	02W	10	SESW	
14	East Fork Charlie Creek	Charlie Creek	43N	02W	10	SWSE	
15	Charlie Creek	Santa Creek	43N	02W	10	NWSW	
16	Unnamed Stream	Charlie Creek	43N	02W	10	SWSW	
17	East Fork Charlie Creek	Charlie Creek	43N	02W	14	SESW	
18	Unnamed Stream	East Fork Charlie Creek	43N	02W	14	SESW	
19	East Fork Charlie Creek	Charlie Creek	43N	02W	14	SWNW	
20	Fagan Creek	East Fork Charlie Creek	43N	02W	14	SWNW	
21	Charlie Creek	Santa Creek	43N	02W	15	NWNW	L 4
22	Unnamed Stream	Charlie Creek	43N	02W	15	NWNW	L 4
23	Unnamed Stream	Charlie Creek	43N	02W	15	NWNW	L 4
24	Preston Creek	Charlie Creek	43N	02W	23	SWSW	
25	Unnamed Stream	Preston Creek	43N	02W	23	SWSW	
26	Unnamed Stream	Preston Creek	43N	02W	23	SWSW	
27	Preston Creek	Charlie Creek	43N	02W	26	NWNW	
28	Unnamed Stream	Preston Creek	43N	02W	26	NWNW	
29	Unnamed Stream	Preston Creek	43N	02W	27	NENE	
30	Unnamed Stream	Charlie Creek	43N	02W	27	NENW	
31	Unnamed Stream	Preston Creek	43N	02W	27	NWNE	
32	Unnamed Stream	Charlie Creek	43N	02W	27	NWNW	
33	Unnamed Stream	Preston Creek	43N	02W	27	NWSE	
34	Unnamed Stream	Charlie Creek	43N	02W	27	NWSW	
35	Unnamed Stream	Charlie Creek	43N	02W	27	NWSW	
36	Unnamed Stream	Preston Creek	43N	02W	27	SWNE	
37	Unnamed Stream	Charlie Creek	43N	02W	27	SWNW	
38	Unnamed Stream	Charlie Creek	43N	02W	27	SWNW	
39	Unnamed Stream	Charlie Creek	43N	02W	27	SWNW	
40	Charlie Creek	Santa Creek	43N	02W	28		
41	Unnamed Stream	Charlie Creek	43N	02W	28		

Attachment 2
 Place of Use Map Fire Suppression - Water Right No. 92-11063F
 National Forests in Idaho and the Kaniksu, Lolo and Kootenai NF in Montana

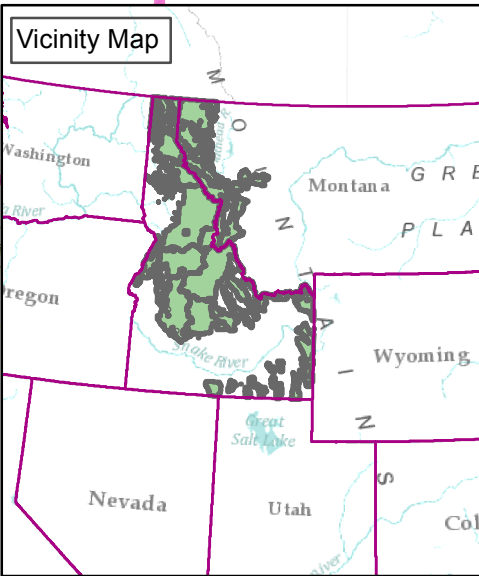
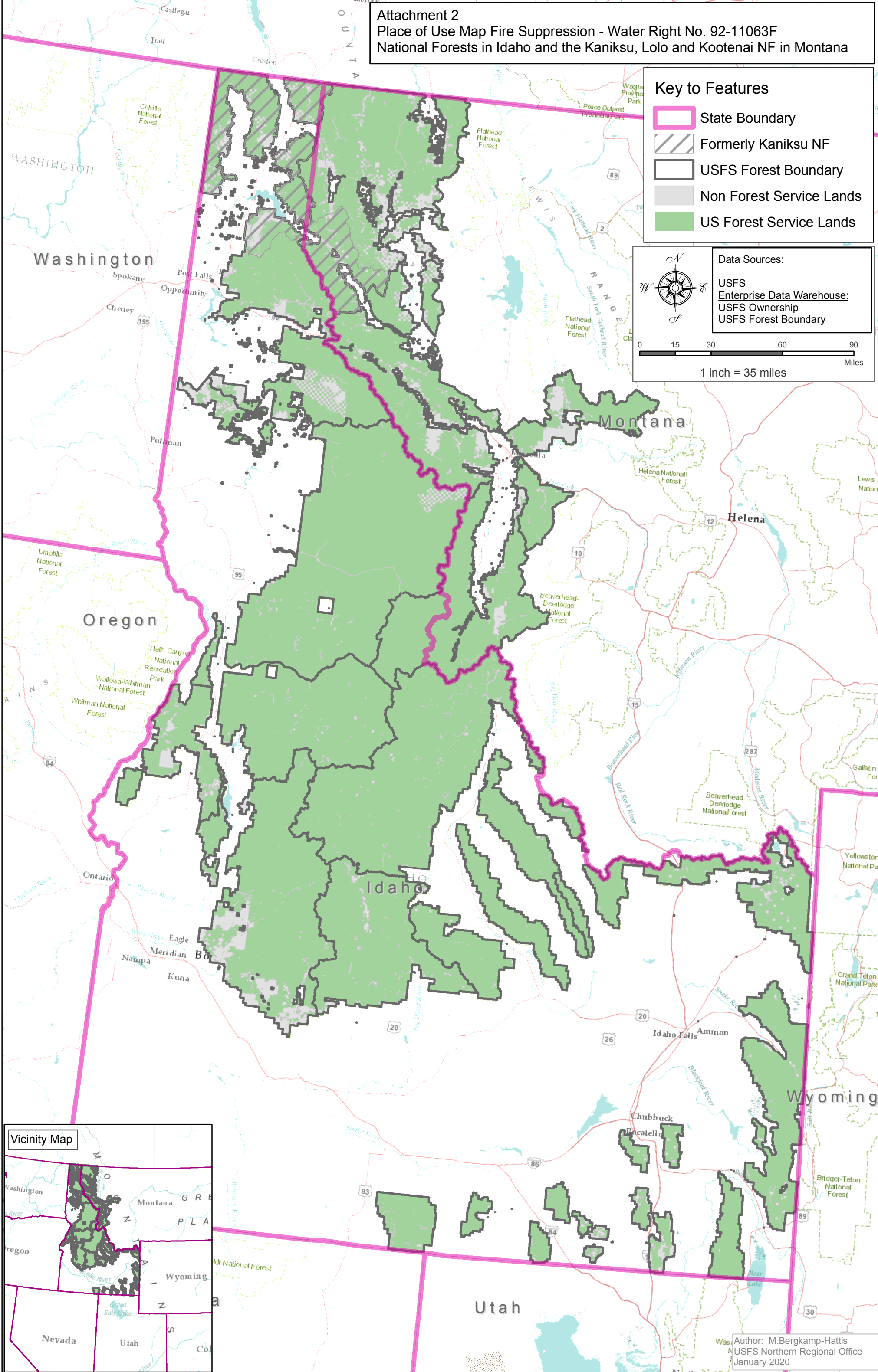
Key to Features

-  State Boundary
-  Formerly Kaniksu NF
-  USFS Forest Boundary
-  Non Forest Service Lands
-  US Forest Service Lands

Data Sources:
 USFS
 Enterprise Data Warehouse:
 USFS Ownership
 USFS Forest Boundary



0 15 30 60 90
 Miles
 1 inch = 35 miles



Author: M. Bergkamp-Hattis
 USFS Northern Regional Office
 January 2020